

Governing Sustainable Cities – success conditions, hindrances and pitfalls

Bob Evans

**Sustainable Cities Research Institute
Northumbria University,
Newcastle upon Tyne, UK**

29/09/2010

©Sustainable Cities Research Institute

1

Three themes:

- The sustainable city**
- Resilience and transition**
- Government, governance and civic engagement**

29/09/2010

©Sustainable Cities Research Institute

2

Why do we need to take sustainability seriously?

Answer No. 1

Because we are altruistic and responsible – we care about global warming, our environmental footprint, ‘unseen others’ and as yet unborn generations

Why do we need to take sustainability seriously?

Answer No. 2

Because our world is changing rapidly, we need to develop robust and resilient communities if we are to secure a long term quality of life for ourselves and our children

Shifts in global prosperity and power...

- ❑ Currently there are about 2 billion people in the global economy**
- ❑ 65% of the human population has never made a telephone call. 1/3rd has no access to electricity**
- ❑ All indications are that this is changing rapidly as a consequence of developments in China, India, Brazil and the Pacific rim, and then Africa.**

- ❑ China is on track to quadruple its economy by 2020**
 - If China is to drive cars at the same density as Germany, this will mean 650 million new vehicles**
 - Beijing aims to encourage every citizen to eat 200 eggs per year. This = 260 billion eggs = 1.3 billion chickens = a grain crop equal to Australia's annual production**
- ❑ India is predicted to replace China as the world's most populous country by 2050**

If China's economy continues to expand by 8% p.a.

- ❑ Income per capita will equal the US by 2031
- ❑ At that point, China's 1.45 billion people will consume 2/3rds of the current world grain harvest
- ❑ Paper consumption would be twice world current production
- ❑ It would use 99million barrels of oil per day.
- ❑ Current world production is 84 million barrels per day



"One thing is clear. the era of easy oil is over. What we all do next will determine how well we meet the energy needs of the entire world in this century and beyond."
- David J O'Reilly, Chairman & CEO, Chevron Corporation, July 2005

Resilience and transition...

Our world is changing rapidly and this change is likely to be:

- Non linear**
- Unstable**
- Unpredictable**
- Volatile**

A resilient socio-ecological system..

- Can withstand shocks**
- Can rebuild itself when necessary**
- Can identify uncertainties**
- Has high adaptive capacity**

northumbria UNIVERSITY
Sustainable Cities Research Institute

Transition strategies to....

- Mitigate carbon lock in
- Develop energy descent
- Optimise resource use,
- Etc

.....will demand major changes in behaviour, values and attitudes, for example.....

29/09/2010 ©Sustainable Cities Research Institute 11

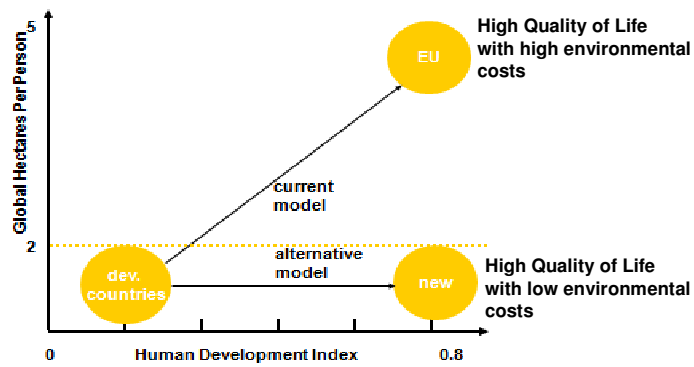
northumbria UNIVERSITY
Sustainable Cities Research Institute

Percentage reductions in consumption required in Europe to secure sustainable resource use.....

<input type="checkbox"/> Energy use	50%
<input type="checkbox"/> Fossil fuels	75%
<input type="checkbox"/> CO ₂ emissions	77%
<input type="checkbox"/> Agricultural land	57%
<input type="checkbox"/> Wood	55%
<input type="checkbox"/> Aluminium	90%
<input type="checkbox"/> Cement	85%
<input type="checkbox"/> Chlorine	100%

12

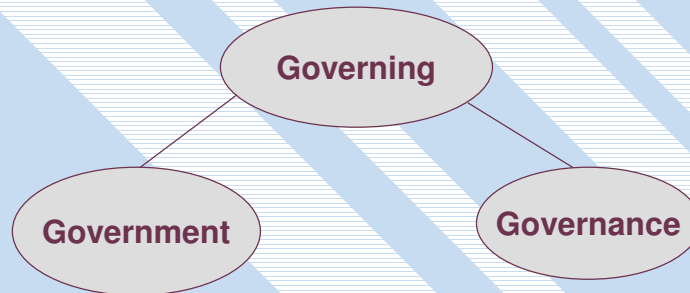
Figure 3: Sustainability Trajectories



What is so important about governance.....?

- The challenges implied in sustainable development are so enormous, so complex and so difficult to implement, that they cannot be left to governments alone.
- Civic engagement is the key to sustainability and community resilience
- 'Government', 'Governance' and 'Governing'

Governing sustainable and resilient communities.....



From 'Governing Sustainable Cities' by Evans, Joas, Sundbach & Theobald, Earthscan Press, 2004

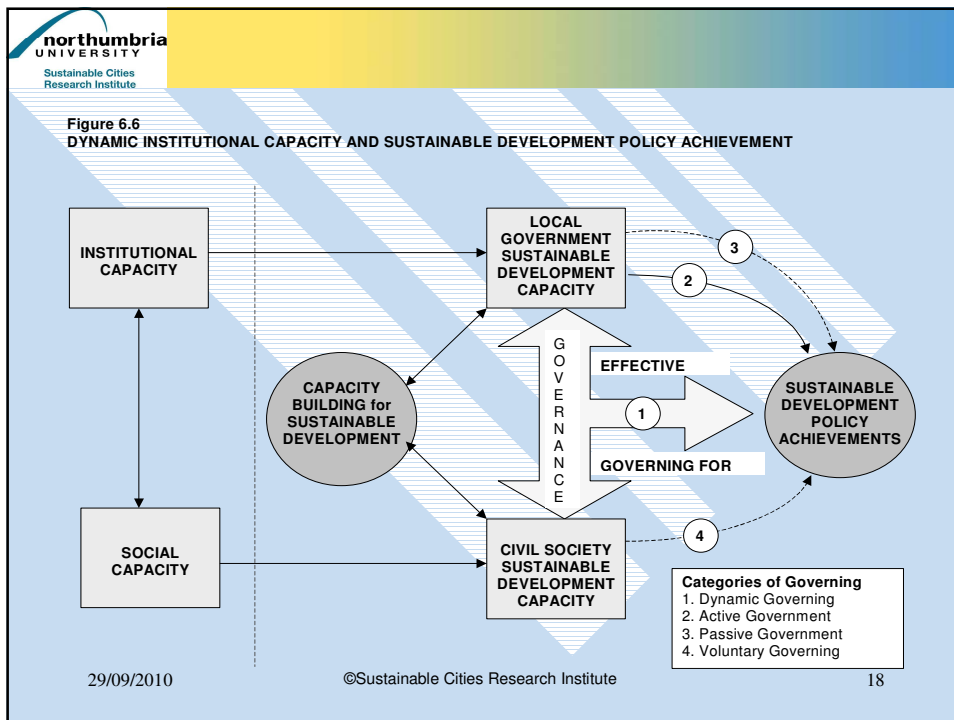
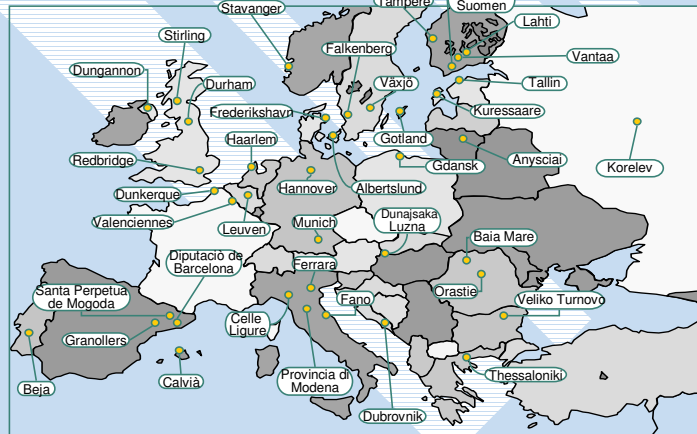
Governance is.....

- ❑ part of the process of governing and it is
- ❑ the sphere of public debate, partnership, interaction, dialogue and conflict entered into by local citizens and organisations and by local government

40 participating cities

DISCUS

Developing Institutional and Social Capacities for Urban Sustainability

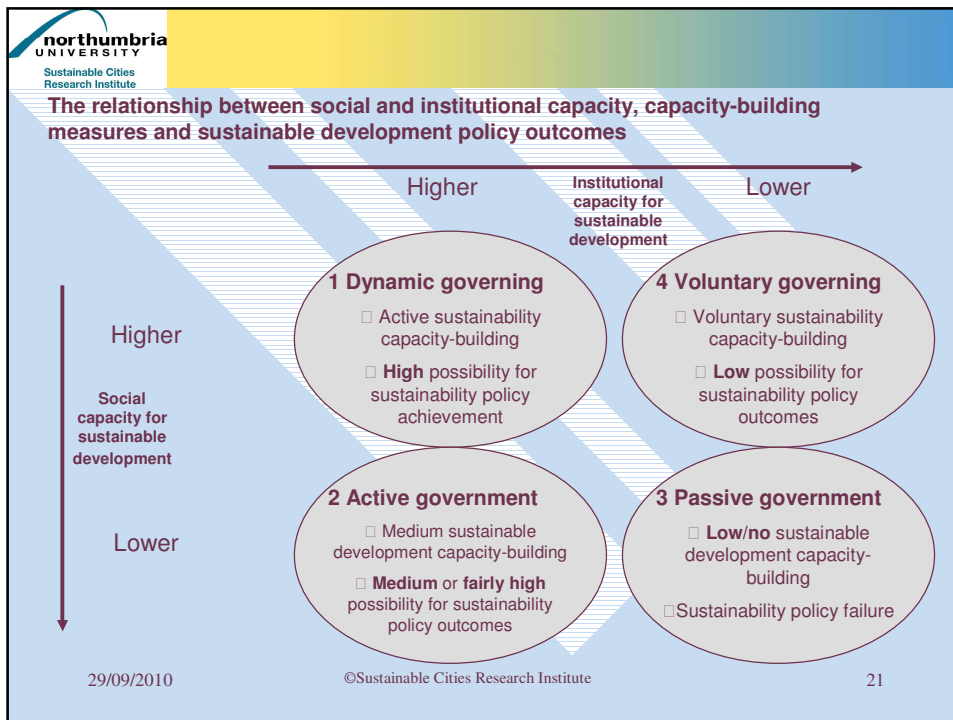


DIMENSIONS OF INSTITUTIONAL CAPACITY

- Administrative Capacity**
- Governance Capacity**
- Political Capacity**
- Intellectual Capacity**

SOCIAL CAPACITY is.....

- Resources – time, energy, knowledge, finance**
- Resilient social networks – ‘community’**
- Trust in local government institutions**
- Confident , innovative and effective local community organisations**
- Social capital.....**



northumbria UNIVERSITY
Sustainable Cities Research Institute

Local government is the key to local governance

- Effective urban governance is nurtured by local government
- The governance process can build institutional capital
- The governance process can build social capital

29/09/2010 22

How can local government nurture community resilience, recognising that.....

- Resources are limited and will probably reduce
- There may be low levels of public understanding of these issues
- Many citizens will reject the 'message'
- Politicians want to be re-elected
- Current levels of trust in local government may be low

Some examples.....

Civic engagement - to harness the energy, resourcefulness and ingenuity of local communities through partnership

Building trust and consent through transparent decision making

Local government organisation - breaking down 'silo' mentalities and embedding new ways of thinking and working to address new realities

Letting people know - this is the way we do things here



northumbria
UNIVERSITY
Sustainable Cities
Research Institute

But.....

- It's not just 'public participation'
- It's about 'bigger than self' issues'
- Dealing with the 'bounce off' ?
- Privatisation?

29/09/2010 ©Sustainable Cities Research Institute 25



northumbria
UNIVERSITY
Sustainable Cities
Research Institute

Bob Evans
Sustainable Cities Research Institute
Northumbria University,
Newcastle upon Tyne, UK

bob2.evans@northumbria.ac.uk

www.sustainable-cities.org.uk

29/09/2010 ©Sustainable Cities Research Institute 26